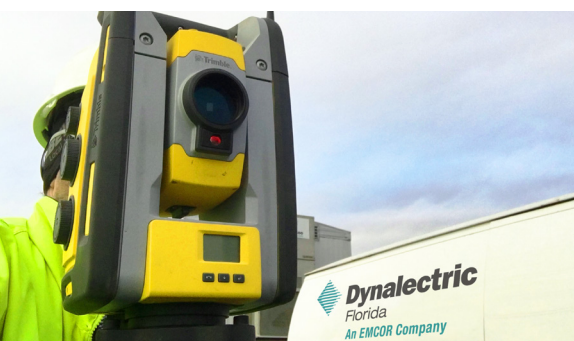


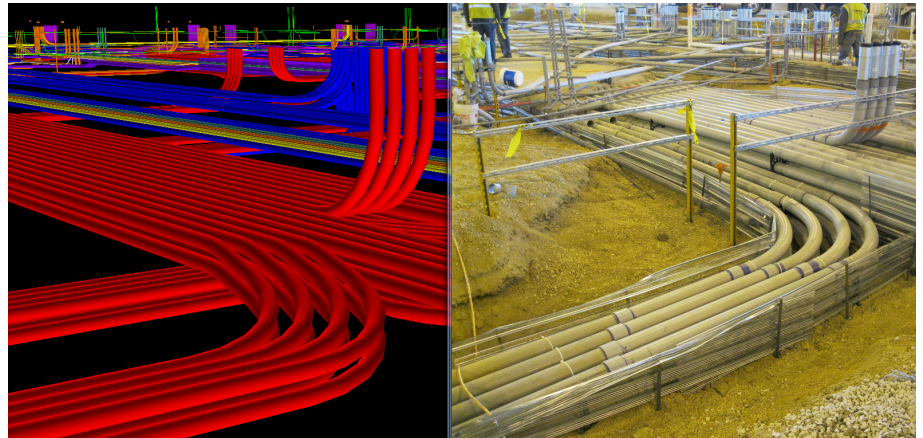
Hundreds of Projects. Eight Major Markets Served.

- » Biotech/Healthcare
- » Commercial
- » Entertainment and hospitality
- » Financial
- » Manufacturing/Industrial
- » Public and government
- » Technology
- » Transportation



Maximum-Value Modeling and Design

Dynalectric Company (Florida) understands the importance of building information modeling (BIM) and the value it brings to the coordination and design of our clients' projects. That's why we have invested in state-of-the-art technology, software, and training, in order to help maximize our BIM department's capabilities.



State-of-the-Art Technology and Training

As the industry evolves into 3D and 4D design, we continue to utilize BIM as the central focus of design and constructability analysis. We leverage the latest Autodesk software, allowing us to model projects with varying levels of detail (LOD) depending on client need. Our BIM department is thoroughly trained and experienced with the following software:

- » Revit
- » AutoCAD MEP
- » Navisworks
- » Trimble Field Point Layout
- » Trimble SysQue Pre-Fabrication

Improving Design Models

Our BIM team works in tandem with our field electrical staff to create accurate and cost-effective electrical installation models. By combining our extensive onsite electrical expertise with our BIM knowledge and capabilities, we strive to produce models that ensure smooth coordination and construction deployment.

BIM-Assisted Prefabrication

Using our prefabrication methods in conjunction with BIM techniques, we can design components tailored to site-specific needs, and build them accordingly.

BIM-assisted prefabrication helps facilitate an efficient coordination process and pays off during field installation.